



# Your Guide to College Readiness





## IN SPRING OF YOUR JUNIOR YEAR YOU PARTICIPATED IN THE CALIFORNIA ASSESSMENT OF STUDENT PERFORMANCE AND PROGRESS (CAASPP) IN ENGLISH LANGUAGE ARTS/LITERACY AND MATHEMATICS.

The California State University (CSU) will, and the California Community Colleges (CCC) may use CAASPP results to determine your readiness to take college level courses before you enroll in college.

CAASPP Early Assessment Program (EAP) results are for placement purposes ONLY. The CSU or CCC does not use EAP results for admission purposes. Students who meet the admission requirements may apply to the CSU or CCC regardless of their EAP status.

## WHAT IS A "COLLEGE LEVEL" COURSE?

Students who demonstrate readiness for college level courses have the English and math skills necessary to succeed academically without the need for remedial coursework. A college level course is a class in which a student earns credit towards a baccalaureate degree. Remedial courses are non-credit classes that do not count towards a baccalaureate degree. Students who are identified as needing additional preparation will be directed to courses or summer sessions, such as the Early Start Program, which are designed to help students attain the skills needed to succeed in courses that count toward baccalaureate degree requirements.

## NEXT STEPS

- Use your assessment results to help you prepare for academic success.
- Your Early Assessment Program (EAP) results are included on the back of the CAASPP Individual Student Score Report provided by your high school.
  - If you authorized the release of your EAP results by marking the release button when you took the CAASPP, the CSU and CCC will automatically receive your results.
  - If you did not mark the release button when you took the CAASPP, you will be required to submit your results to the CSU or CCC to which you apply, upon request.
- ACT or SAT test results can also be used as indicators of your readiness to take college level courses. The test(s) must be taken in the fall of your senior year if you did not take them in your junior year.
- The CSU campuses to which you apply will notify you of the next steps necessary to satisfy English and/or math requirements based on your assessment results.

## YOUR TEST RESULTS: WHAT THEY MEAN

EAP results provide an early indicator of your readiness to take college level courses. Knowing and understanding your EAP status and overall CAASPP scores will give you the opportunity to improve your skills by enrolling in classes that will help you prepare for college level courses. Use this EAP guide to help you determine the steps you need for a smooth transition to a CSU. Refer to the EAP status section in the guide that applies to you based on your CAASPP EAP and/or SAT/ACT results.



## "READY" FOR ENGLISH AND MATH

A CAASPP EAP status of **"STANDARD EXCEEDED"** means you are **READY** to enroll directly in college level English and/or math courses upon enrolling at the CSU. You are not required to take the CSU's English Placement Test (EPT) and/or the Entry Level Math (ELM) exam and are exempt from the Early Start Program.

You can also earn a **"READY"** status if you receive one of these qualifying test scores:

**English:**

**ACT: 22 and above**

**SAT: 500 and above**

**AP Language/Literature Composition: 3 and above**

**Math:**

**ACT: 23 and above**

**SAT: 550 and above**

**AP Calculus or AP Statistics Exam: 3 and above**



**EXEMPT**

from EPT and/or ELM and the CSU Early Start Program.  
**You are ready to enroll directly in college level courses upon admission to a CSU.**

**Congratulations! Meeting this requirement is the first step to academic success.** Keep your skills sharp in your senior year by following these recommendations:

- Take a fourth year of rigorous English and math courses. Consult with your high school counselor to help you select the right course(s) for you.
- Consider taking Advanced Placement (AP) English or math courses, if offered at your school. You may be able to earn college credit by passing the AP exam.



## FOR ENGLISH AND MATH

A CAASPP EAP status of **"STANDARD MET"** means you are **"CONDITIONALLY READY"** and must complete one of the approved senior year-long English and/or math courses prior to enrolling at a CSU. Completing an approved senior year course with a grade of "C" or better will exempt you from the CSU Early Start Program.

You are not required to take the CSU's English Placement Test (EPT) and/or the Entry Level Math (ELM) exam.

You can also earn a CSU **"CONDITIONALLY READY"** status if you receive one of these qualifying test scores:

**English:**  
**ACT: 19-21 or SAT: 460-490**

**Math:**  
**ACT: 20-22 or SAT: 490-540**

**COMPLETE**

an approved senior year-long English and/or math course with a grade of "C" or better:

**YES**

**EXEMPT**  
from EPT and/or ELM and CSU Early Start Program  
  
**May enroll directly in college level courses upon admission to a CSU**

**NO**

**NOT EXEMPT**  
**Required to participate in the CSU Early Start Program**  
(Unless you meet other Early Start Program exemptions)  
Go to: <http://www.csusuccess.org/earlystart/early-start-faq>

## COURSE OPTIONS TO SATISFY THE CSU "CONDITIONALLY READY" REQUIREMENTS

"Conditionally Ready" students must participate in the CSU Early Start Program unless they complete an approved senior year-long English and/or math course with a grade of "C" or better or meet other Early Start Program exemptions.

The campus to which you decide to enroll will verify this requirement was completed. Students who meet this requirement through the senior year-long course or other accepted pathway may enroll directly in college level English and math courses.

### English Courses\*

- Expository Reading & Writing Course (ERWC)
- AP Literature/Composition
- Weighted Honors English
- IB English

### Math Courses\*

All courses with a prerequisite of Algebra II or Integrated Math III, including:

- Trigonometry
- Math Analysis
- Pre-Calculus or Calculus
- AP Calculus AB or BC
- AP Physics
- AP Statistics

\* Courses must be adopted through the UC A-G Course Management Portal and appear on the "A-G" Course Guide.

## IF YOU DO NOT SATISFY THE REQUIREMENTS

The CSU recommends taking the EPT/ELM. These tests provide another opportunity to demonstrate your readiness to take English and math college level courses.

- You must receive a qualifying score on the EPT (147 or above) and ELM (50 or above) to enroll directly in college level English and math courses.
- If you do not take the EPT/ELM or receive a qualifying score on the test(s) you will be required to participate in the CSU Early Start Program unless you meet other Early Start exemptions. For more information visit: <http://www.csusuccess.org/earlystart/early-start-faq>.

**IMPORTANT:** You will not be allowed to register for orientation or classes if you do not take appropriate action or participate in the Early Start Program (if required) in the summer before your first term at a CSU campus.

# "NOT YET READY" OR "NOT READY" FOR ENGLISH AND MATH

A CAASPP EAP status of **"STANDARD NEARLY MET"** or **"NOT MET"** means you are **NOT READY** at this time to take English and/or math college level courses upon admission to the CSU. Therefore, you must take the CSU English and/or math placement tests (EPT/ELM) prior to enrollment. Not being ready for college level courses does not mean you are not eligible to apply and be admitted to the CSU. If you have met all eligibility requirements, we encourage you to apply. Your readiness results are used to determine if you will need remedial courses upon enrollment.

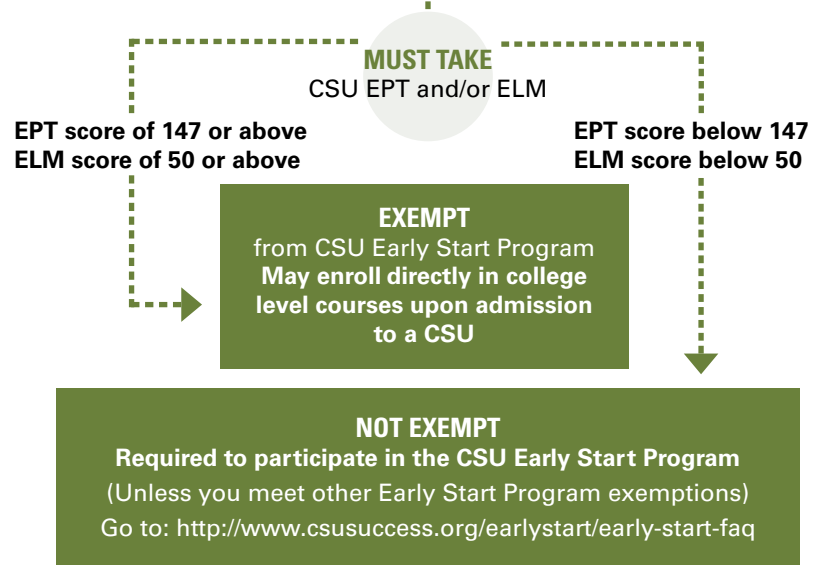
A CSU **"NOT YET READY"** or **"NOT READY"** status also applies if you received ACT/SAT scores within the ranges listed below:

### English:

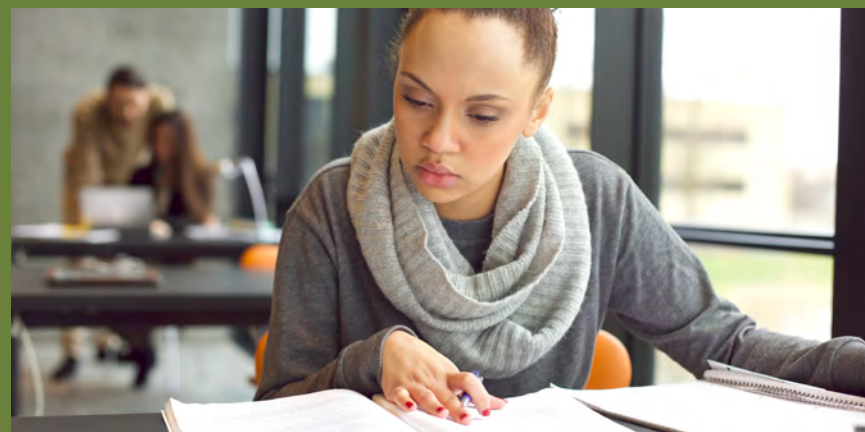
**ACT: 18 or below, SAT: 450 or below**

### Math:

**ACT: 19 or below, SAT: 480 or below**



Note: Students meeting the admission requirements may apply to the CSU regardless of their EAP status. The CSU does not use the EAP results for admission purposes.



## WHAT YOU CAN DO TO BECOME COLLEGE READY

Take a year-long English and math course in your senior year to improve your skills. Consult with your high school counselor to help you select the appropriate course.

- Prepare for the CSU EPT/ELM exam by using the online test prep tool available at [www.csunmathsuccess.org/exam\\_prep](http://www.csunmathsuccess.org/exam_prep).
- Register early for the EPT/ELM exams once you have applied to a CSU. View the testing schedule at <http://www.ets.org/csu>.
- Receive a qualifying score on the EPT (147+) and ELM (50+) to enroll directly in CSU college level English and math courses.
- Receive a qualifying score on the ACT/SAT/AP to enroll directly in CSU college level English and math courses.
- If you do not receive a qualifying score on the EPT/ELM, you must participate in the CSU Early Start Program unless you meet other Early Start exemptions.

**IMPORTANT:** You will not be allowed to register for orientation or classes if you do not take the EPT/ELM tests or participate in Early Start Program in the summer before your first term at a CSU campus. Check with the campuses to which you are applying to for EPT/ELM deadlines.



## THE EARLY START PROGRAM

The CSU Early Start Program (ESP) requires incoming first-time freshmen who do not demonstrate readiness for college level English and/or math courses to begin taking remedial courses before their first term. The goal of the ESP is to better prepare students in English and math, thereby improving their chances of completing a baccalaureate degree. Below is additional information on the CSU ESP.

- If you are required to participate in the ESP, you will begin in the summer before the start of your freshman year.
- The CSU campus(es) to which you are admitted will provide you information on whether or not you need to participate in the ESP.
- Upon determining which campus you will attend, please follow the directions provided by the campus on how, when and where to sign up for the ESP.
- Early Start English and math courses are available at all CSU campuses. You can complete your ESP course(s) at a campus near you.
- California residents or AB 540 students who apply for financial aid and have an Estimated Family Contribution of \$5,000 or less will be eligible for a waiver of the per unit fee.
- For more information about the ESP, including course listings, visit: [www.csusuccess.org/earlystart](http://www.csusuccess.org/earlystart).

**IMPORTANT:** You will not be allowed to register for orientation or classes if you do not take the EPT/ELM tests or participate in ESP in the summer before your first term at a CSU campus.



## EAP AT THE CALIFORNIA COMMUNITY COLLEGES

Visit <http://extranet.cccco.edu/Divisions/StudentServices/EAP.aspx> for more information on use of CAASPP EAP results for exemptions and placements into appropriate courses at the community college you plan to attend.

## FREQUENTLY USED ACRONYMS

**ACT:** American College Testing

**AP:** Advanced Placement

**CAASPP:** California Assessment of Student Performance and Progress

**EAP:** Early Assessment Program

**ELM:** Entry Level Mathematics Exam

**EPT:** English Placement Test

**ERWC:** Expository Reading and Writing Course

**ESP:** Early Start Program

**IB:** International Baccalaureate

**SAT:** Scholastic Aptitude Test



## ADDITIONAL RESOURCES

Learn about English and math interactive tools:  
[www.csusuccess.org](http://www.csusuccess.org)

CSU EAP Coordinators list:  
[calstate.edu/eap/documents/EAPRoster.pdf](http://calstate.edu/eap/documents/EAPRoster.pdf)

Individual EAP results:  
[www.csumathsuccess.org/eap\\_results](http://www.csumathsuccess.org/eap_results)

Sign up for SAT: [www.sat.collegeboard.org](http://www.sat.collegeboard.org)  
ACT: [www.actstudent.org](http://www.actstudent.org)

Learn more about the Early Start Program:  
[www.csusuccess.org/earlystart](http://www.csusuccess.org/earlystart)

For more information about CAASPP go to:  
[www.cde.ca.gov/ta/tg/ca/](http://www.cde.ca.gov/ta/tg/ca/)